

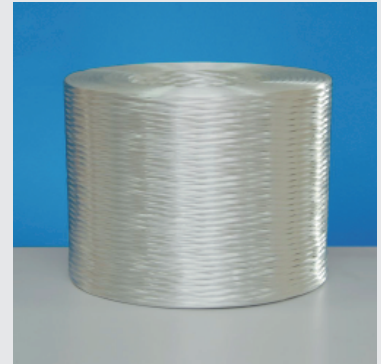
产品说明 Product Description

988A 无捻粗纱是热塑性塑料理想的增强材料，涂覆硅烷基浸润剂，能与多种树脂兼容。

988A 主要用于双螺杆挤出成型工艺生产热塑性塑料粒，广泛用于汽车部件、电子电气、机械工具、化工防腐、体育用品等。

988A Roving for Thermoplastics is an ideal reinforcement for thermoplastics. It is coated with a silane-based sizing compatible with multiple resin systems.

988A is typically designed for the twin screw extrusion process to manufacture thermoplastic pellets/granulates. Key applications include automotive parts, electrical & electronics, mechanical tools, chemical corrosion resistance and sports goods.



产品特点 Product Features

- ◎ 挤出剪切性好，玻纤易分散，可提高开机率
- ◎ 使用中无纤维飞扬，改善了工作环境
- ◎ 使用顺畅性好，接头少，玻纤浪费少，利用率高
- ◎ 线密度更稳定，制品的玻纤含量更均匀
- ◎ 复合材料机械性能优良，表面性能好，无浮纤

·Good extrusion shear property and easy fiber dispersion, improving efficiency

·No fiber fly in the air, providing better working environment

·Easy to handle with few splices, minimizing fiberglass waste and maximizing its utility rate

·Uniform linear density, ensuring consistent fiberglass content of the final composite product

·Excellent mechanical properties of parts and smooth, shiny surface of the composite product with no fiber show

规格代号 Specification

玻璃类型 Glass type	E			
浸润剂类型 Sizing type	硅烷 Silane			
典型纤维直径 Typical filament diameter (um)	11	13	14	17
典型线密度 Typical linear density (tex)	500	2000	1000 2000	2400
示例 Example	EDR17-2400-988A			

技术指标 Technical Parameters

项目 Item	线密度偏差 Linear density variation	含水率 Moisture content	可燃物含量 Sizing content	断裂强度 Breakage strength
单位 Unit	%	%	%	N / tex
检测方法 Test method	ISO 1889	ISO 3344	ISO 1887	ISO 3341
指标 Standard range	± 5	≤ 1.00	0.25 ± 0.10	≥ 0.25

使用说明 Instructions

◎ 本产品应在12个月内使用最佳，使用前应保存在原包装内。

◎ 产品使用时注意防护，避免产品擦毛、损伤等情况。

·The product is best used within 12 months after production, and should be kept in the original package before use.

·Care should be taken when using the product to prevent it from being scratched or damaged.

使用说明 Instructions

◎ 使用前调理纱线的温湿度与环境温湿度平衡，使用时对环境温湿度进行适当控制。

The temperature and humidity of the product should be balanced with the ambient temperature and humidity before use, and the ambient temperature and humidity should be properly controlled during the use.

包装信息 Packaging

项目 Item	单位 unit	指标 Index			
典型包装方式 Typical packaging method	/	采用托盘包装 The product can be packed on pallets.			
典型纱团高度 Typical package height	mm (in)	260 (10.2)			
纱团内径 Package inner diameter	mm (in)	160 (6.3)			
典型纱团外径 Typical package outer diameter	mm (in)	280 (11.0)		310 (12.2)	
典型纱团重量 Typical package weight	kg (lb)	15.6 (34.4)		22 (48.5)	
层数 Number of layers	层 (layer)	3	4	3	4
每层纱团个数度 Number of packages per layer	个 (ocs)	16		12	
每托纱团个数度 Number of packages per pallet	个 (pcs)	48	64	36	48
每托重量 Net weight per pallet	kg (lb)	748.8 (1650.8)	998.4 (2192.3)	792 (1746.1)	1056 (2328.1)
托盘长度 Pallet length	mm (in)	1140 (44.9)		1270 (50.0)	
托盘宽度 Pallet width	mm (in)	1140 (44.9)		960 (37.8)	
托盘高度 Pallet height	mm (in)	940 (37.0)	1200 (47.2)	940 (37.0)	1200 (47.2)

贮存 Storage

在没有特殊要求的情况下，玻璃纤维产品应贮存在干燥、阴凉的地方，防止受潮。最佳存储条件为温度 $-10^{\circ}\text{C} \sim 35^{\circ}\text{C}$ ，相对湿度 $\leq 80\%$ 。为确保安全，避免损坏产品，托盘的堆码高度不应超过三层。当堆放两层或三层高时，要求正确地、平稳地移动上面的托盘。

Unless otherwise specified, the fiberglass products should be stored in a dry, cool and moisture proof area. The best temperature and humidity should be maintained at $-10^{\circ}\text{C} \sim 35^{\circ}\text{C}$ and $\leq 80\%$ respectively. To ensure safety and avoid damage to the product, the pallets should not be stacked more than three layers high. When the pallets are stacked in two or three layers, special care should be taken to correctly and smoothly move the upper pallet.

